

# Election Anomaly Finder

Stephanie Singer

Hatfield School of Government & Verified Voting

Funding from National Science Foundation  
code at: [GitHub.com/sfsinger19103/election\\_anomaly](https://github.com/sfsinger19103/election_anomaly)

# Imagine November 2020

Your candidate is behind in the count, by a small margin



# Imagine November 2020

Your candidate is behind in the count, by a small margin

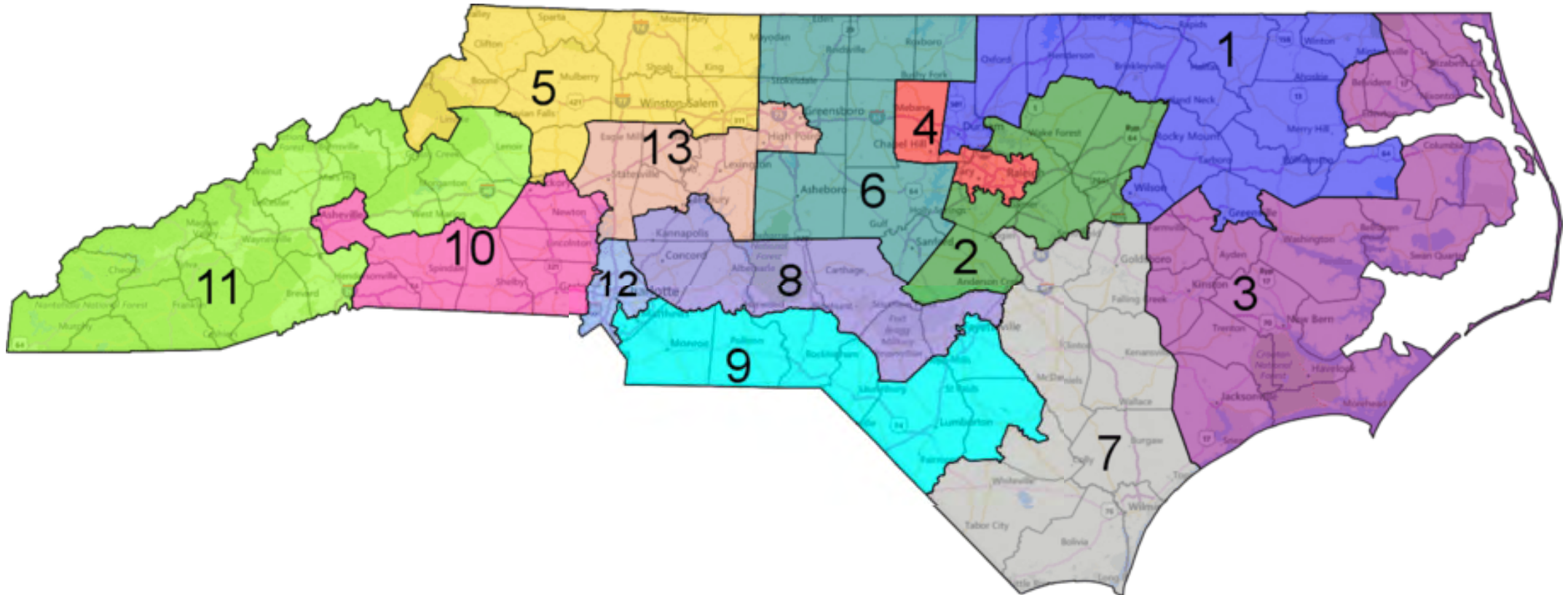
# How can data help you?

# Election Anomaly Finder



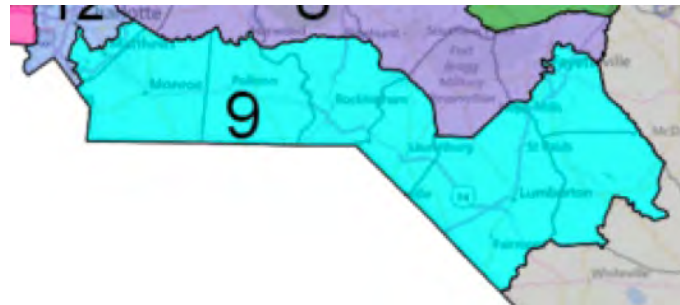
Plus 5 major US territories: PR, VI, GU, AS, MP

# Election Anomaly Finder



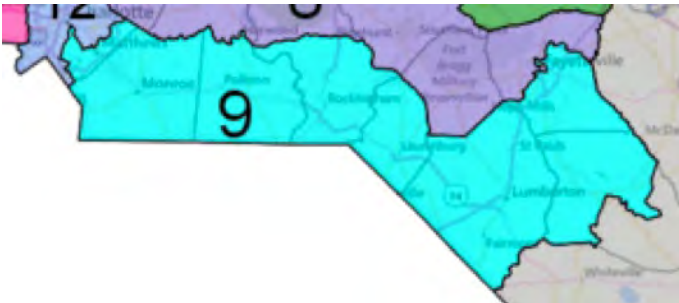
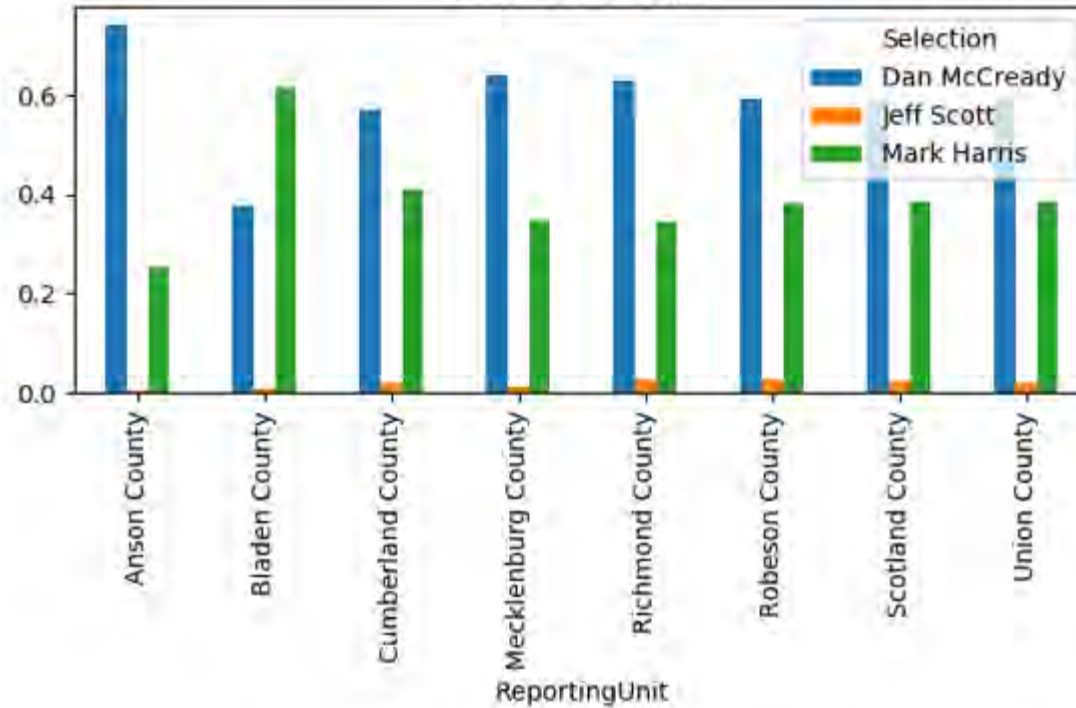
# Election Anomaly Finder

Understand one contest



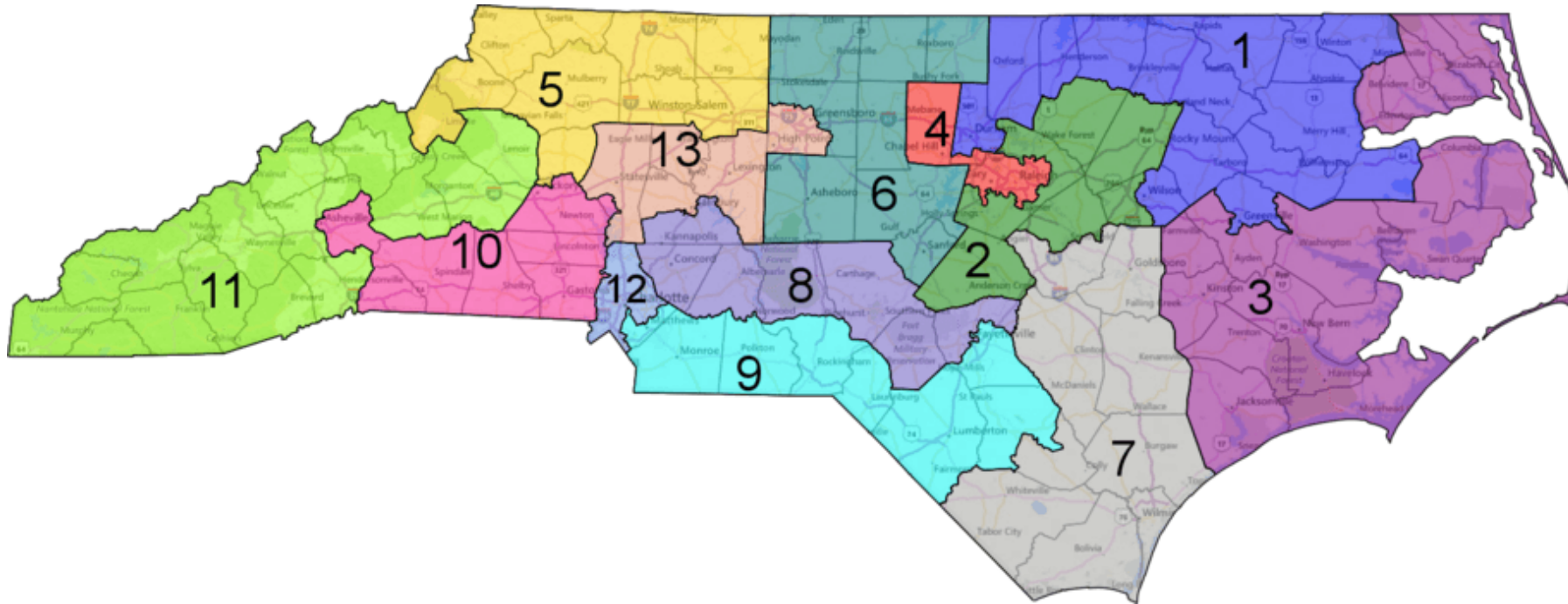
# Election Anomaly Finder

North Carolina;US Congress;House of Representatives;District 9  
absentee-mail  
Vote Percentages



# Election Anomaly Finder

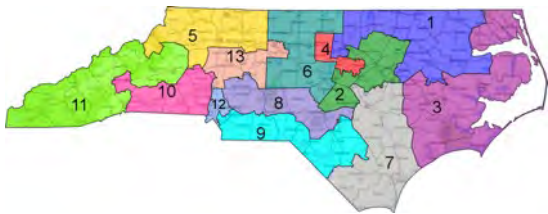
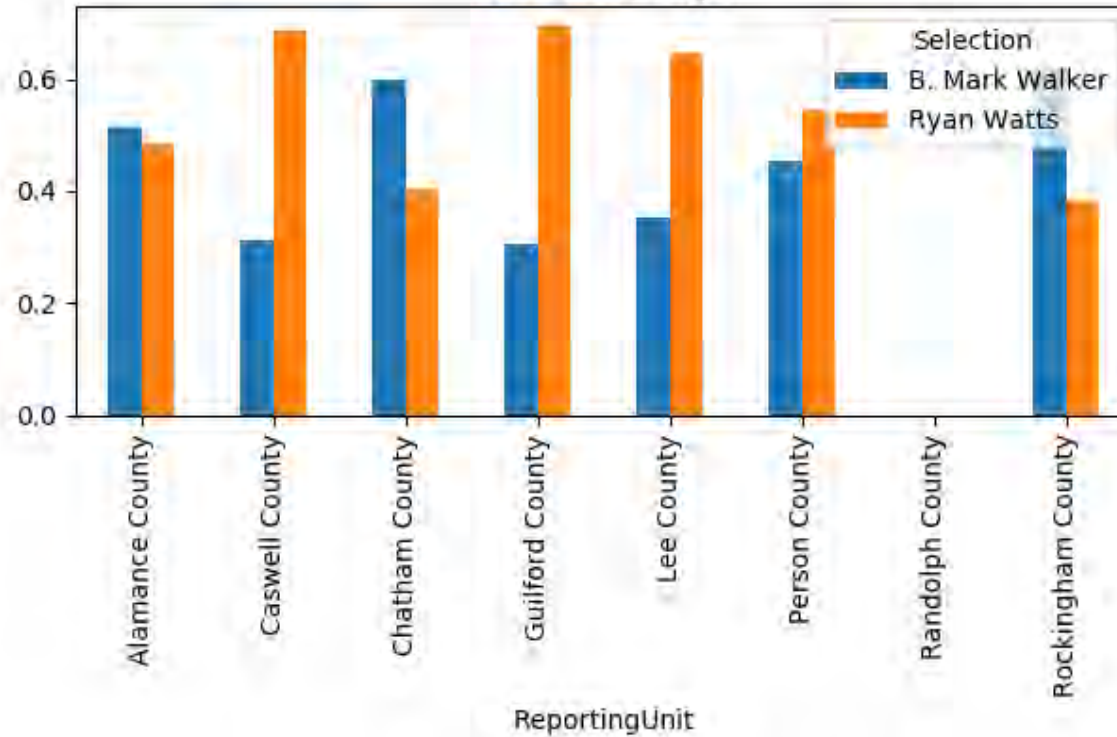
Understand several contests





# Election Anomaly Finder

North Carolina;US Congress;House of Representatives;District 6  
provisional  
Vote Percentages



# Election Anomaly Finder



Plus AK and HI and 5 major US territories: PR, VI, GU, AS, NM

# Election Anomaly Finder

Choose a breakdown



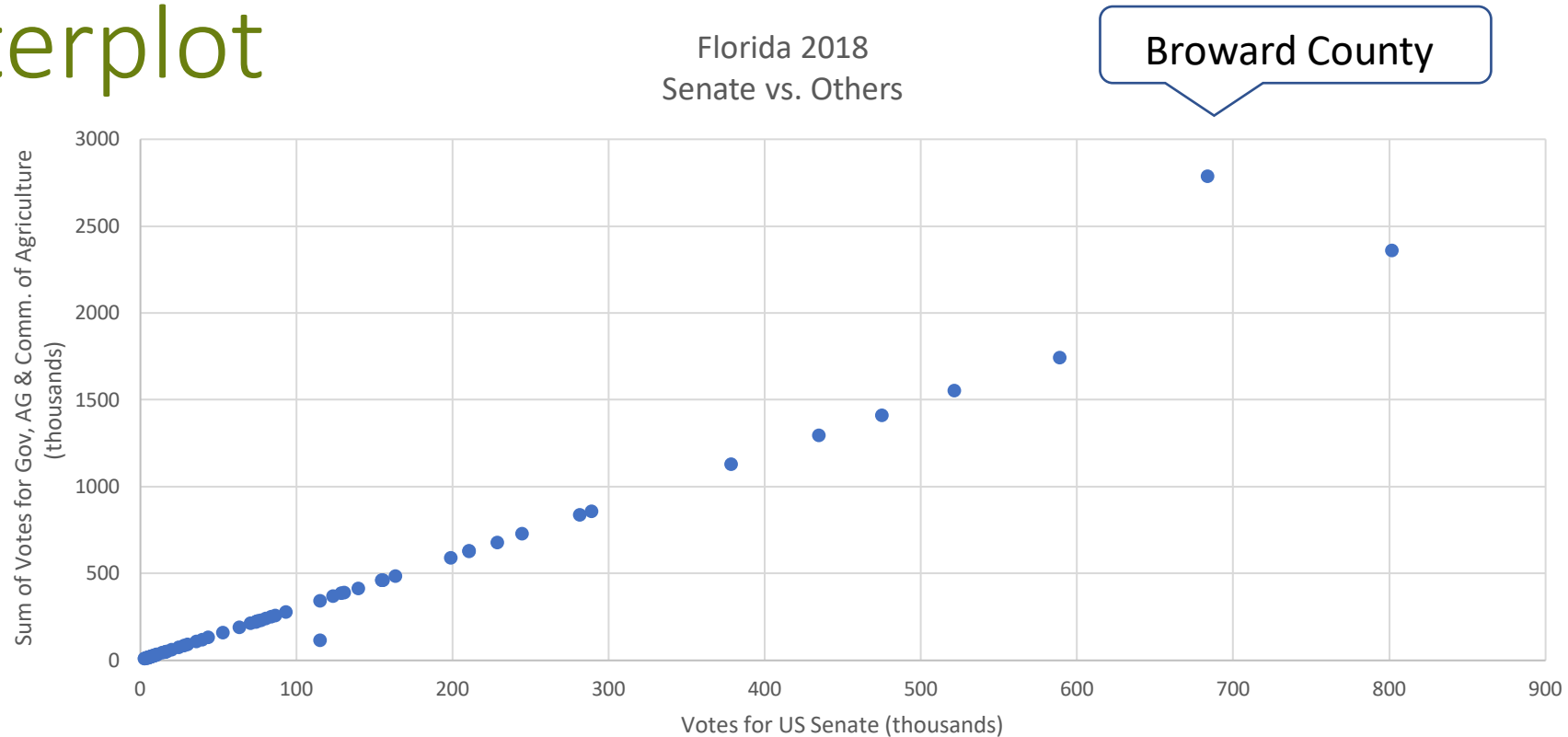
# Election Anomaly Finder

Choose any two kinds of count

- D vs. R for Congressional contests?
- Voting Restoration Amendment Yes vs Ends Dog Racing No?
- R for Senate 2018 vs. R for Senate 2016?

# Election Anomaly Finder

## Scatterplot



# Election Anomaly Finder

Choose a breakdown



# Scope for 2020

**Where: 50 States + DC**

**Contests: Federal, statewide, state legislature, ballot measures**

# Timing for 2020

**Now:** code (beta, open source)



**October:** public web site



**November:** live data soon after election



# 2021 and beyond

more data

more analysis